

772-221-8988 Office
800-330-1263 Office

HR PROPERTIES



772-260-5499 Cell
772-336-5051 Fax

Harbour Ridge Resident Realtors: Tony Stein, Broker, Kathy Stein, Gwen Deisler, Tom Tranberg
Web Site: www.HRProperties.com E-mail: kathy@HRProperties.com



Sweetbay Village
San Remo Collection Home
\$359,000
3-Bedrooms/2.5-Baths
2,489 Square Feet

One Room/Great Room Design 24' x 19'

Great Room features cathedral ceiling & new wood floors

Foyer features new exterior doors, invisible screen, plantation shutters and adjacent powder room.



Living Room - Dining Room
Florida Sun Room
&
Wonderful Water & Golf Course View



Tony & Kathy Stein  **Celebrating 22 Years At Harbour Ridge Yacht & Country Club**



Florida Room & Entertainment Center:

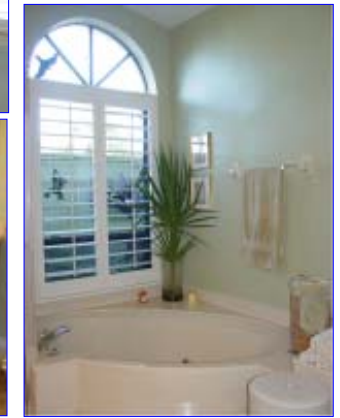
Light and bright, wood floors, ceiling fan, crown molding, plantation shutters, & best of all - a wonderful water view

- Price:** \$359,000 - JUST LISTED
- Model** San Remo Collection Home - Totally Remodeled & Updated
- Address** 1633 Sweetbay Circle, Sweetbay Village
- Size** 3-Bedrooms, 2.5-Baths, 2400 SF
- Garage** 2-car garage & Golf Cart Garage with additional storage
- Taxes** \$5,256.49 (2010)
- Comments** Totally renovated in 2005-2006 - Special Features Include:
 - New Roof - 2007
 - New Gutters
 - Hurricane shutters on all windows and doors - some are clear to provide light into the house when the shutters are up.
 - Hurricane panels for attic air vents
 - 2 1/2 baths newly remodeled with 36" custom cabinets
 - New kitchen with 42" upper cabinets, 2006
 - Under cabinet lighting
 - Granite counter tops and backsplash
 - Stainless steel appliances with extended 5-year warranty
 - Crown molding
 - Plantation shutters throughout
 - Powder Room with decorative vanity
 - New wood flooring
 - New bedroom carpeting
 - Window film on all back windows for sun
 - Doors have invisible screens
 - Guest suite with separate door
 - 3rd Bedroom/den with built in cabinetry for computer or television
 - 2 pond views
 - New paver patio with motorized awning -- AND LOTS MORE!

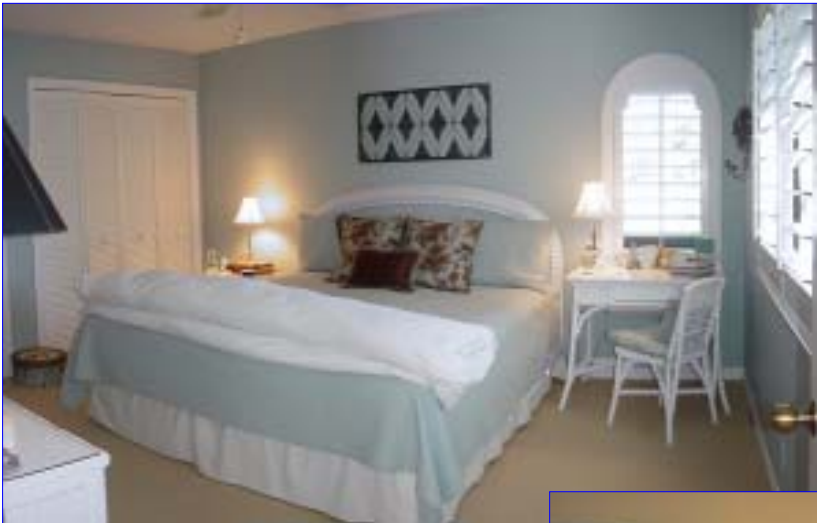




Master Bedroom Suite 17' x 15'



Plantation shutters,
ceiling fan, carpet,
walk-in California closet,
new bathroom



Guest Bedroom Suite 14' x 12'



3rd Bedroom Suite 13' x 11'





Wonderful Double Pond View

