

772-221-8988 Office
800-330-1263 Office

HR PROPERTIES



772-260-5499 Cell
772-336-5051 Fax

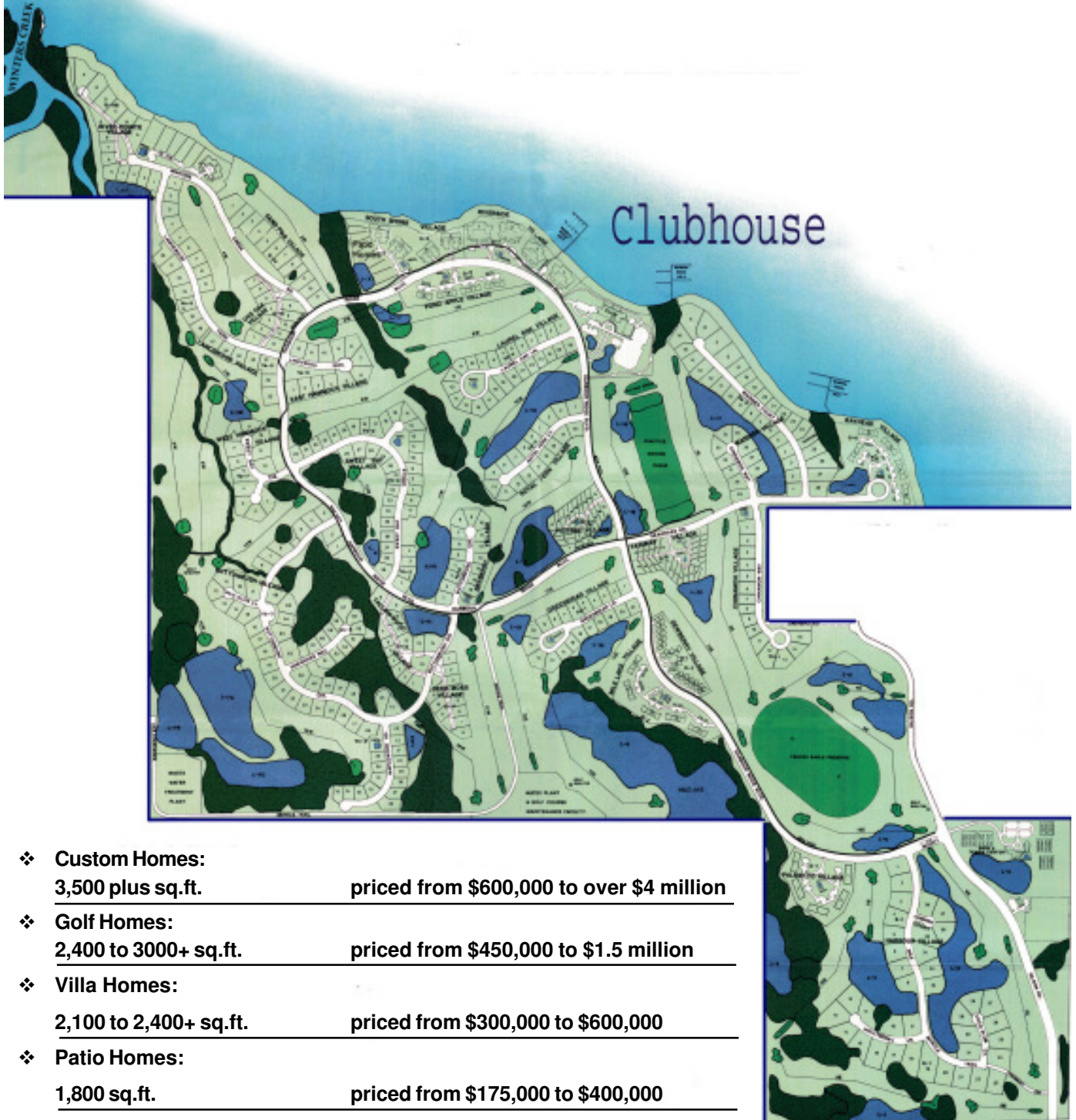
Harbour Ridge Resident Realtors: Tony Stein, Broker, Kathy Stein, Laurie Morris; Tom Tranberg
Web Site: www.HRProperties.com E-mail: kathy@HRProperties.com

**A COMPILATION OF
ALL STANDARD FLOOR PLANS AT
HARBOUR RIDGE YACHT & COUNTRY CLUB**

*Not All Models Are Currently Available For Sale
Call Or E-mail Us For Current Listings*

Over the past few years, we have experienced very heavy sales.
If you find a style home or condo that is of interest to you,
It may not be available to buy now but if you let us know,
We will put you on our “**KEEP ME POSTED**” list for that model
And contact you as soon as one becomes available.

Harbour Ridge Plot Plan



- ❖ **Custom Homes:**
3,500 plus sq.ft. priced from \$600,000 to over \$4 million

- ❖ **Golf Homes:**
2,400 to 3000+ sq.ft. priced from \$450,000 to \$1.5 million

- ❖ **Villa Homes:**
2,100 to 2,400+ sq.ft. priced from \$300,000 to \$600,000

- ❖ **Patio Homes:**
1,800 sq.ft. priced from \$175,000 to \$400,000

- ❖ **Riverfront Condominiums:**
 - 2,500 to 3,000 sq.ft.+ priced from \$500,000 to \$1,200,000
 - 1,500 to 1,950+ sq.ft. priced from \$250,000 to \$400,000

- ❖ **Golf Course, Lake or Marsh Condominiums:**
 - 1,500 to 1,950+ sq.ft. priced from \$100,000 to \$400,000



Harbour Ridge Condominiums

Riverside Village All condominiums in Riverside Village enjoy a spectacular panoramic view of the wide St. Lucie River. These condos are located in 4 individual and well spaced buildings and are located directly on the river. They are very spacious ranging from 2,500 to 3,000 plus square feet. The Nautilus Condo is located on the four corners of each building and has a large wrap porch which many owners have enclosed with sliding glass doors to make a wonderful Florida room. The Atlantis Condos, located in the interior of the building, have porches that protrude from the center of the building affording privacy and spectacular river views. All major rooms are located directly on the river and enjoy breathtaking views. Additional features of both styles include: cathedral and tray ceilings, garage, golf cart garage, elevators for second floor condos and community pool with two wonderful summer kitchens.



Osprey Village All 8 condominiums, (1 building), in Osprey Village enjoy a spectacular panoramic view of the wide St. Lucie River. They are very spacious ranging from 2,500 to 3,000 plus square feet. The Nautilus Condo is located on the four corners of the condominium building and has a large wrap porch which many owners have enclosed with sliding glass doors to make a wonderful Florida room. The Atlantis Condos, located in the interior of the building, have porches that protrude from the center of the building affording privacy and spectacular river views. All major rooms are located directly on the river and enjoy breathtaking views. Additional features include: cathedral and tray ceilings, garage, golf cart garage, elevators for second floor condos and community pool.

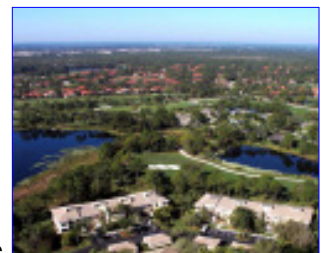


South Shore Village is located on the North Fork of the St. Lucie River. All condominiums in this village enjoy wonderful wide St. Lucie River views. There are 32 condos in all located in 4 buildings. Each condo has its own enclosed garage and a separate golf cart garage with additional storage space. Community pool w/a wonderful summer kitchen. Totally renovated 2006

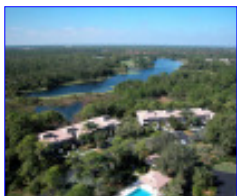
Bayhead Village is also located on the St. Lucie River and is surrounded by St. Lucie River Views. There are 5 individual buildings in this village with a total of 40 condominiums. The village is quaint and has old world charm; residents of this village never want to leave. Carports, golf cart storage, and a village pool with barbecuing facilities, the whole village enjoys a very private location. Totally renovated 2005/2006



Pond Apple Village is located near the Clubhouse and on the 1st hole of the Pete and P.B. Dye, River Ridge golf course. The village enjoys wonderful views of the 1st and 9th hole on the River Ridge course and the pond and green on #1. There are a total of 32 condominiums in all in 4 individual buildings. Community pool with barbecuing facilities. Carports. Golf cart storage is available for all condos. Totally renovated 2005



Mile Lake Village is located on a natural lake that is one mile in length. Mile Lake Village contains 40 condominiums in all, 5 buildings, and enjoys panoramic views of Mile Lake and the 15th hole on the Golden Marsh golf course in the distance or the 14th par three hole on Golden Marsh. Community pool with barbecuing facilities. Carports. Golf cart storage is available for all condos. Totally renovated 2004



Palmetto Village located near the tennis courts and new fitness center, this village is in a world of its own. Beautiful private park setting, wonderful golf course or Mile Lake & preserve views, all 40 condominiums are private and have picturesque views. A real find. Wonderful village pool with barbecuing facilities in a natural setting..



772-221-8988 Office

800-330-1263 Free

HR PROPERTIES



772-260-5499 Cell

772-336-5051 Fax

Harbour Ridge Resident Realtors: Tony & Kathy Stein, Laurie Morris; Tom Tranberg
Web Site: www.HRProperties.com E-mail: kathy@HRProperties.com

SPECTACULAR VIEW OF THE ST. LUCIE RIVER

The Nautilus Condo
2,370 to 3,000+ Sq. Ft.
3 Bedroom, 3 Bath

Riverside Village



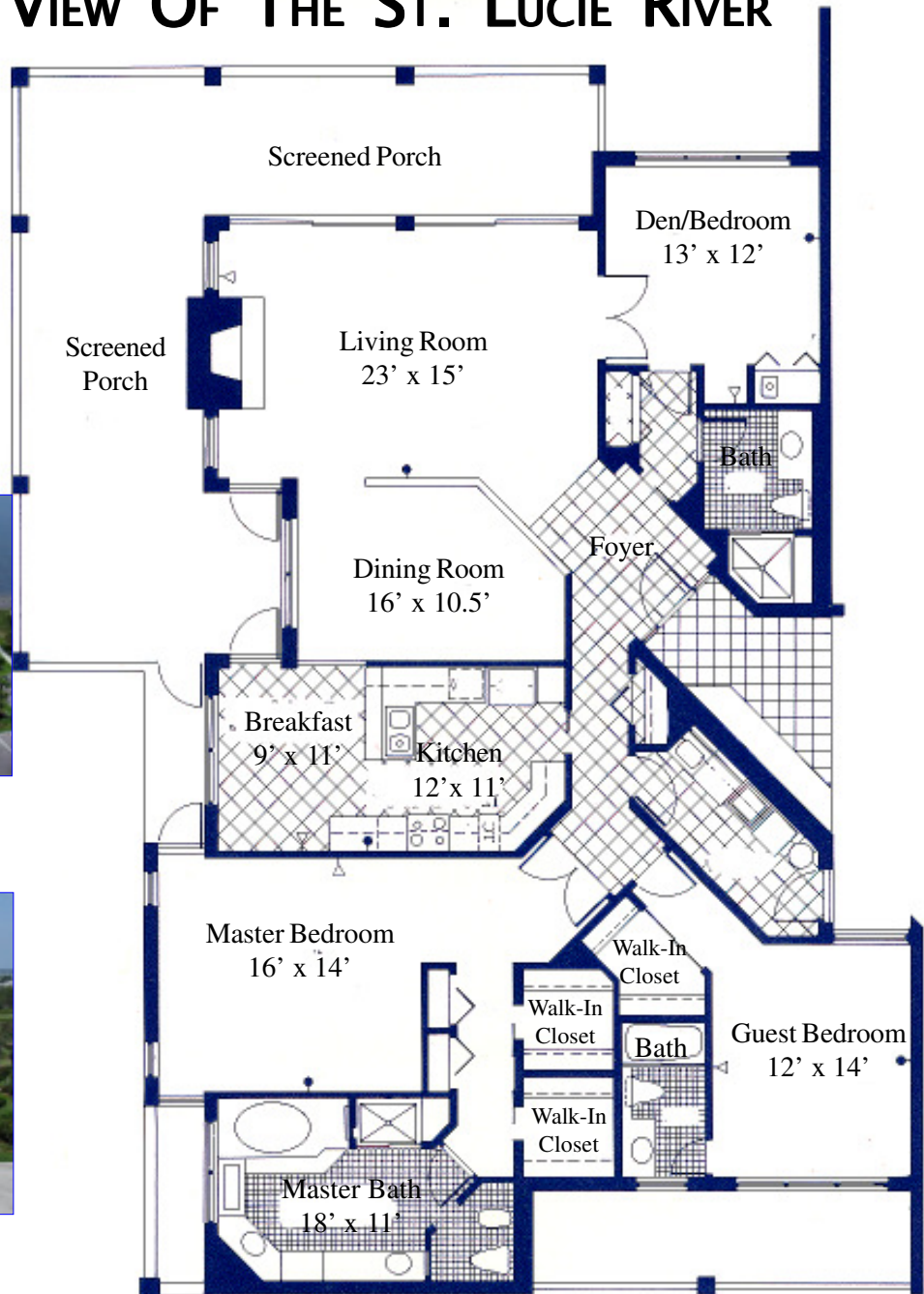
Osprey Village



The Nautilus Condominiums Riverside & Osprey Villages

All condominiums enjoy a spectacular panoramic view of the wide St. Lucie River. The Nautilus Condo, 3000 sq.ft. plus square feet, is located on the four corners of each building and has a large wrap porch which many owners have enclosed with sliding glass doors to make a wonderful Florida room. Additional features include: cathedral and tray ceilings, garage, golf cart garage, elevators for second floor condos and community pool with two wonderful summer kitchens. All buildings were renovated summer of 2005.

Dimensions and specifications are approximate



772-221-8988 Office

800-330-1263 Free

HR PROPERTIES

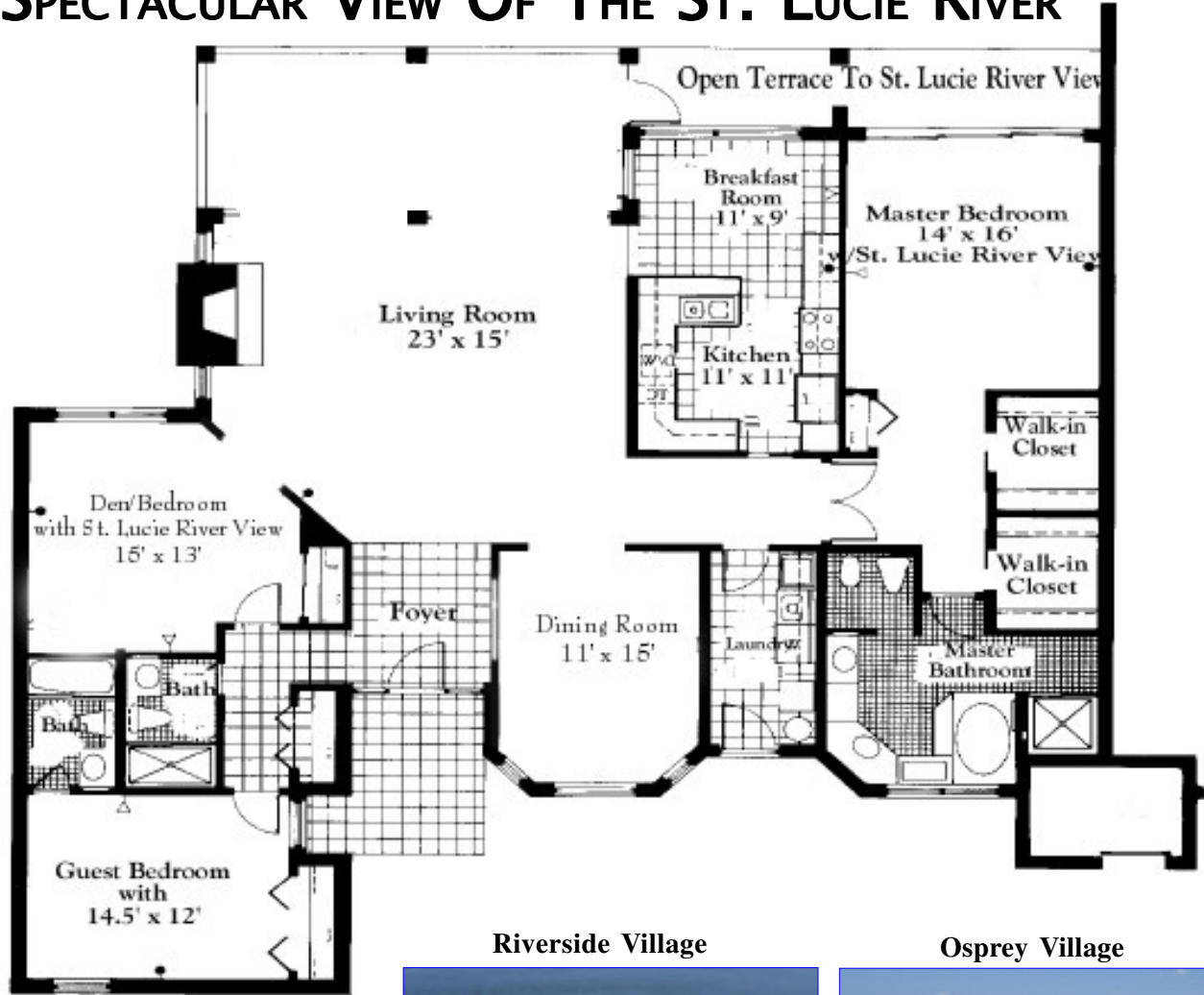


772-260-5499 Cell

772-336-5051 Fax

Harbour Ridge Resident Realtors: Tony & Kathy Stein, Laurie Morris; Tom Tranberg
Web Site: www.HRProperties.com E-mail: kathy@HRProperties.com

SPECTACULAR VIEW OF THE ST. LUCIE RIVER



Riverside Village

Osprey Village



The Atlantis Condo

2,362 to 2,600 Sq. Ft.

3 Bedroom, 3 Bath

The Atlantis Condominiums In Riverside

All condominiums enjoy a spectacular panoramic view of the wide St. Lucie River. The Atlantis Condos, 2,400 sq.ft., are located in the interior of the building, have porches that protrude from the center of the building affording privacy and spectacular river views. All major rooms are located directly on the river and enjoy breathtaking views. Additional features include: cathedral and tray ceilings, garage, golf cart garage, elevators for second floor condos and community pool with two wonderful summer kitchens. All buildings renovated summer 2005

HR PROPERTIES

Palm City Professional Building: 2646 Mapp Road, Suite 306, Palm City, FL 34990

772-221-8988 Office

800-330-1263 Free

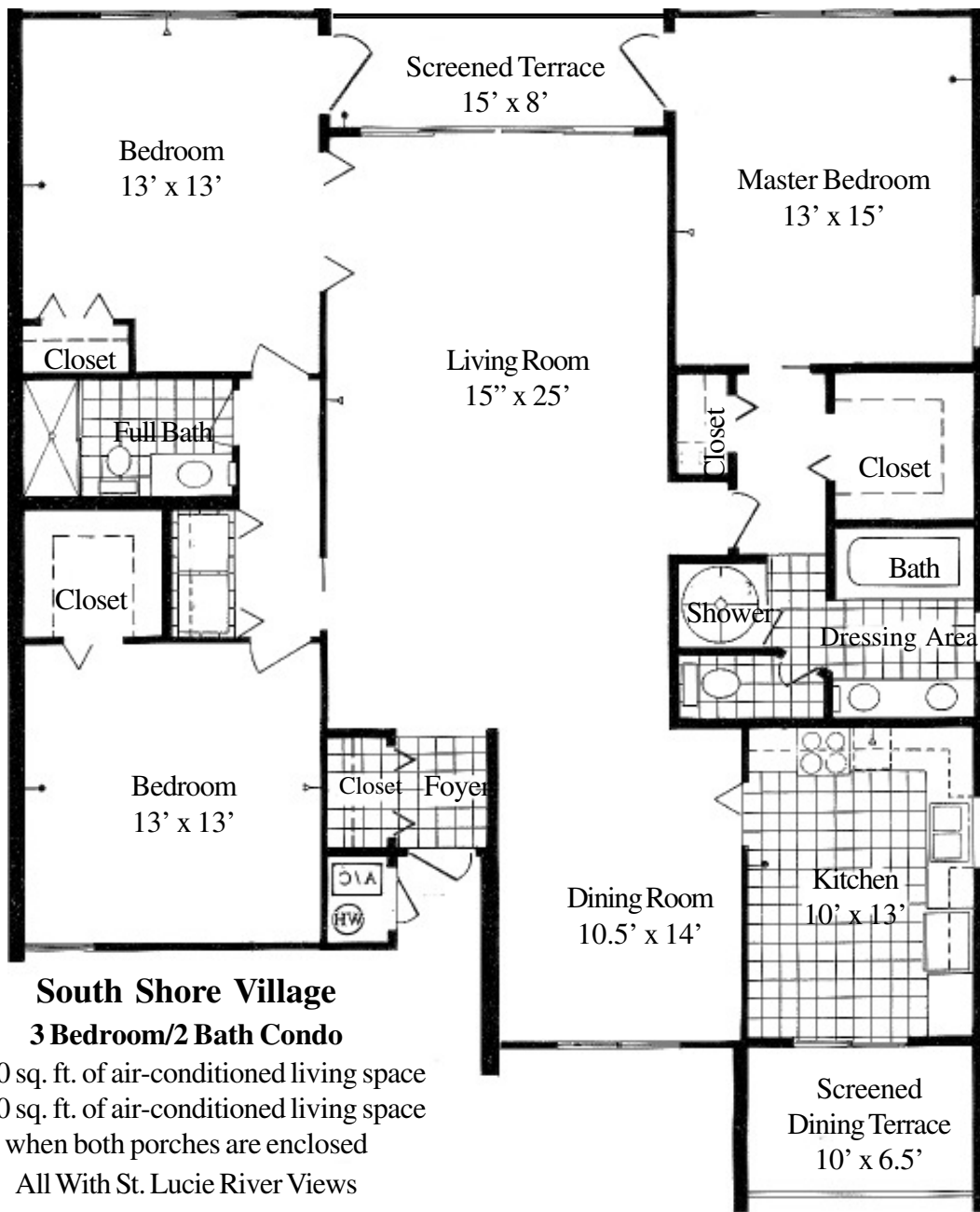
HR PROPERTIES



772-260-5499 Cell

772-336-5051 Fax

Harbour Ridge Resident Realtors: Tony & Kathy Stein, Laurie Morris; Tom Tranberg
Web Site: www.HRProperties.com E-mail: kathy@HRProperties.com



South Shore Village

3 Bedroom/2 Bath Condo

1,750 sq. ft. of air-conditioned living space

1,940 sq. ft. of air-conditioned living space

when both porches are enclosed

All With St. Lucie River Views



South Shore Village is located on the North Fork of the St. Lucie River. All condominiums in this village enjoy wonderful wide St. Lucie River views. There are 32 condos in all located in 4 buildings. Each condo has its own enclosed garage and a separate golf cart garage with additional storage space. Community pool w/a wonderful summer kitchen.

772-221-8988 Office

800-330-1263 Free

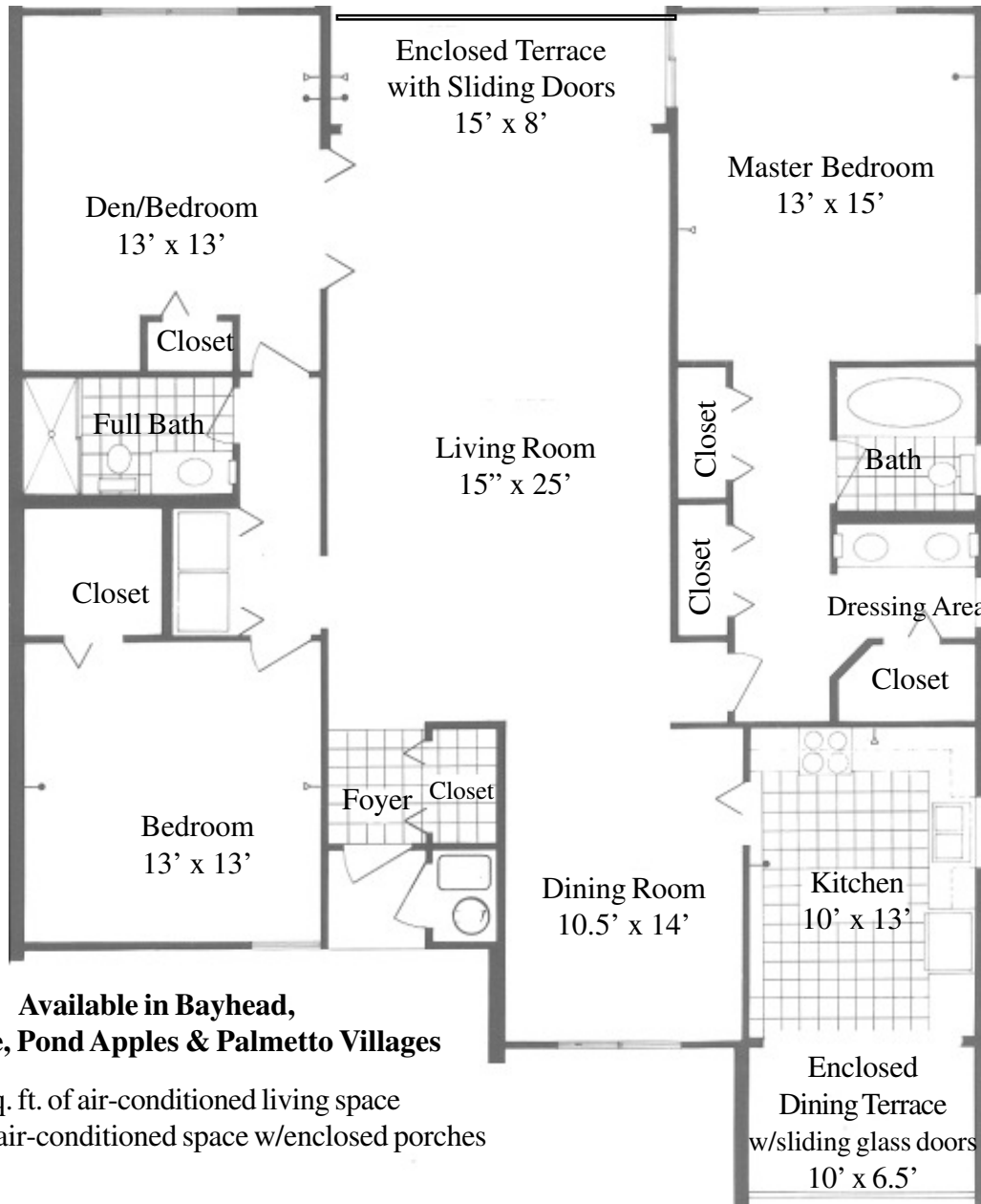
HR PROPERTIES



772-260-5499 Cell

772-336-5051 Fax

Harbour Ridge Resident Realtors: Tony & Kathy Stein, Laurie Morris; Tom Tranberg
Web Site: www.HRProperties.com E-mail: kathy@HRProperties.com



Available in Bayhead,
Mile Lake, Pond Apples & Palmetto Villages

1,750 sq. ft. of air-conditioned living space
1,940 sq. ft. of air-conditioned space w/enclosed porches

Bayhead Village is also located on the St. Lucie River and is surrounded by St. Lucie River Views. There are 5 individual buildings in this village with a total of 40 condominiums. The village is quaint and has old world charm. Carports, golf cart storage, and a village pool with barbequing facilities, the whole village enjoys a very private location.

Pond Apple Village is located near the Clubhouse and on the 1st hole of the Pete and P.B. Dye, River Ridge golf course. The village enjoys wonderful views of the 1st and 9th hole on the River Ridge course and the pond and green on #1. There are a total of 32 condominiums in all in 4 individual buildings. Community pool with barbequing facilities. Carports. Golf cart storage

Mile Lake Village is located on a natural lake that is one mile in length. Mile Lake Village contains 40 condominiums in all, 5 buildings, and enjoys panoramic views of Mile Lake and the 15th hole on the Golden Marsh golf course in the distance or the 14th par three hole on Golden Marsh. Community pool with barbequing facilities. Carports. Golf cart storage is available for all

Palmetto Village located near the tennis courts and new fitness center, this village is in a world of its own. Beautiful private park setting, wonderful golf course or Mile Lake & preserve views, all 40 condominiums are private and have picturesque views. A real find. Village pool with barbequing facilities.

772-221-8988 Office

800-330-1263 Free

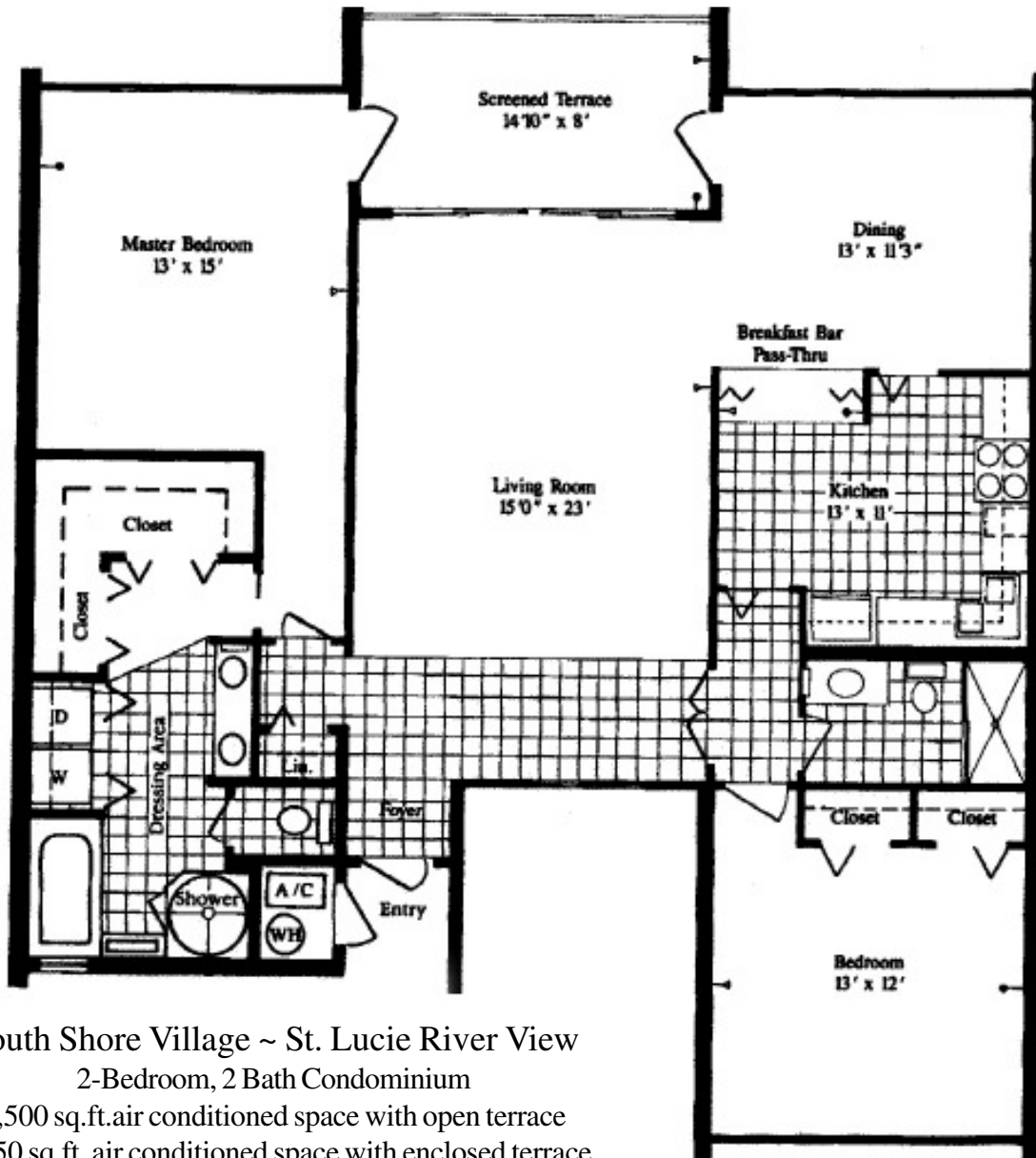
HR PROPERTIES



772-260-5499 Cell

772-336-5051 Fax

Harbour Ridge Resident Realtors: Tony & Kathy Stein, Laurie Morris; Tom Tranberg
Web Site: www.HRProperties.com E-mail: kathy@HRProperties.com



South Shore Village ~ St. Lucie River View

2-Bedroom, 2 Bath Condominium

1,500 sq.ft. air conditioned space with open terrace

1,650 sq.ft. air conditioned space with enclosed terrace

7/0



South Shore Village is located on the North Fork of the St. Lucie River. All condominiums in this village enjoy wonderful wide St. Lucie River views. There are 32 condos in all located in 4 buildings. Each condo has its own enclosed garage and a separate golf cart garage with additional storage space. Community pool w/a wonderful summer kitchen.

772-221-8988 Office

800-330-1263 Free

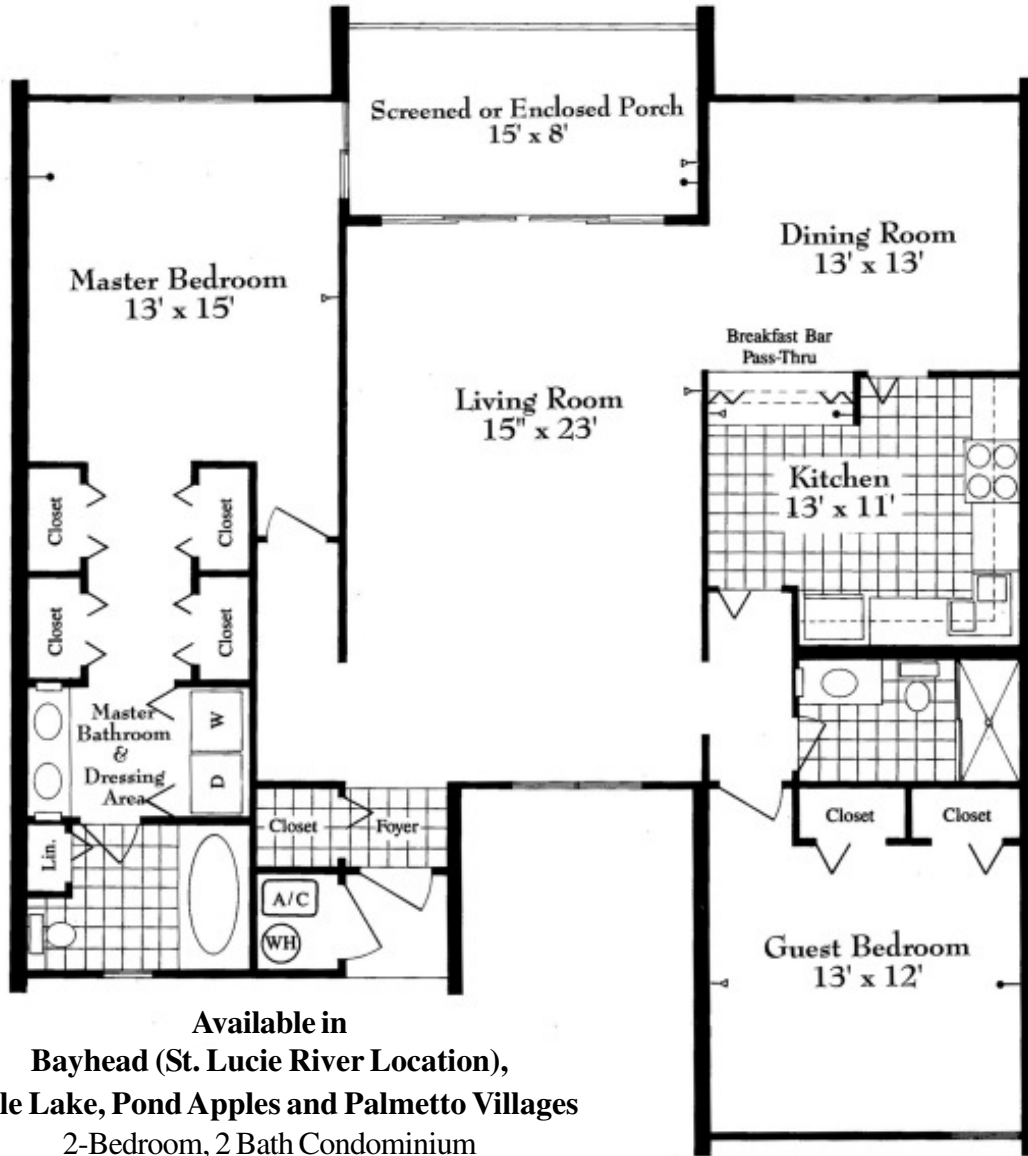
HR PROPERTIES



772-260-5499 Cell

772-336-5051 Fax

Harbour Ridge Resident Realtors: Tony & Kathy Stein, Laurie Morris; Tom Tranberg
Web Site: www.HRProperties.com E-mail: kathy@HRProperties.com



Available in
Bayhead (St. Lucie River Location),
Mile Lake, Pond Apples and Palmetto Villages
 2-Bedroom, 2 Bath Condominium
 1,500 sq.ft. air conditioned space with open terrace
 1,650 sq.ft. air conditioned space with enclosed terrace

Bayhead Village is also located on the St. Lucie River and is surrounded by St. Lucie River Views. There are 5 individual buildings in this village with a total of 40 condominiums. The village is quaint and has old world charm. Carports, golf cart storage, and a village pool with barbequing facilities, the whole village enjoys a very private location.

Pond Apple Village is located near the Clubhouse and on the 1st hole of the Pete and P.B. Dye, River Ridge golf course. The village enjoys wonderful views of the 1st and 9th hole on the River Ridge course and the pond and green on #1. There are a total of 32 condominiums in all in 4 individual buildings. Community pool with barbequing facilities. Carports. Golf cart storage

Mile Lake Village is located on a natural lake that is one mile in length. Mile Lake Village contains 40 condominiums in all, 5 buildings, and enjoys panoramic views of Mile Lake and the 15th hole on the Golden Marsh golf course in the distance or the 14th par three hole on Golden Marsh. Community pool with barbequing facilities. Carports. Golf cart storage is available for all

Palmetto Village located near the tennis courts and new fitness center, this village is in a world of its own. Beautiful private park setting, wonderful golf course or Mile Lake & preserve views, all 40 condominiums are private and have picturesque views. A real find. Village pool with barbequing facilities.