

772-221-8988 Office
800-330-1263 Free

HR PROPERTIES



772-260-5499 Cell
772-221-8045 Fax

Harbour Ridge Resident Realtors: Tony Stein, Broker, Kathy Stein, Laurie Morris; Tom Tranberg
Web Site: www.HRProperties.com E-mail: kathy@HRProperties.com



\$679,000

*In Osprey Village
The Atlantis Condominium*

Price: **\$679,000 JUST LISTED**
Address/Village: 904 Harbour Ridge Blvd., Osprey Village
Model/Size: Atlantis Condominium, 2,582 sq. ft. living area
Bedrooms/Bathrooms: 3-bed/3-bath, Master Bedroom, 14' x 16.5',
Guest Bedroom, 12' x 15', Den/Bedroom, 11' x 13'
Comments: WIDE Panoramic St. Lucie Riverfront Views greet you from the time you open the front door of this spectacular 3 bedroom, 3 bath condominium in Osprey Village.
Special Features Include: Pecan Plank Wood Floors, Accent Crown Molding, Real-Fyre Gas Log Fireplace, Custom



Mantle Over Fireplace By Don Bittle, Custom Closets, Built-Ins, Wonderful Riverfront Screened Porch With Both A River & Golf Course View, Ceiling Fans, and Lots More. There is an enclosed car garage and a golf cart garage with storage. Owner may be willing to sell some furnishings.





Den/3rd Bedroom
Wide St. Lucie River View
built-in:
wet bar, entertainment center, & desk

Dining Room
Wide St. Lucie River View



Spacious Kitchen
Wide St. Lucie River View

Breakfast Area
Wide St. Lucie River View



Screened Terrace, 22' x 20'
With Both Wide St. Lucie River View & Golf Course View (Full Length View Of #3, River Ridge)



SPLIT BEDROOM FLOOR PLAN



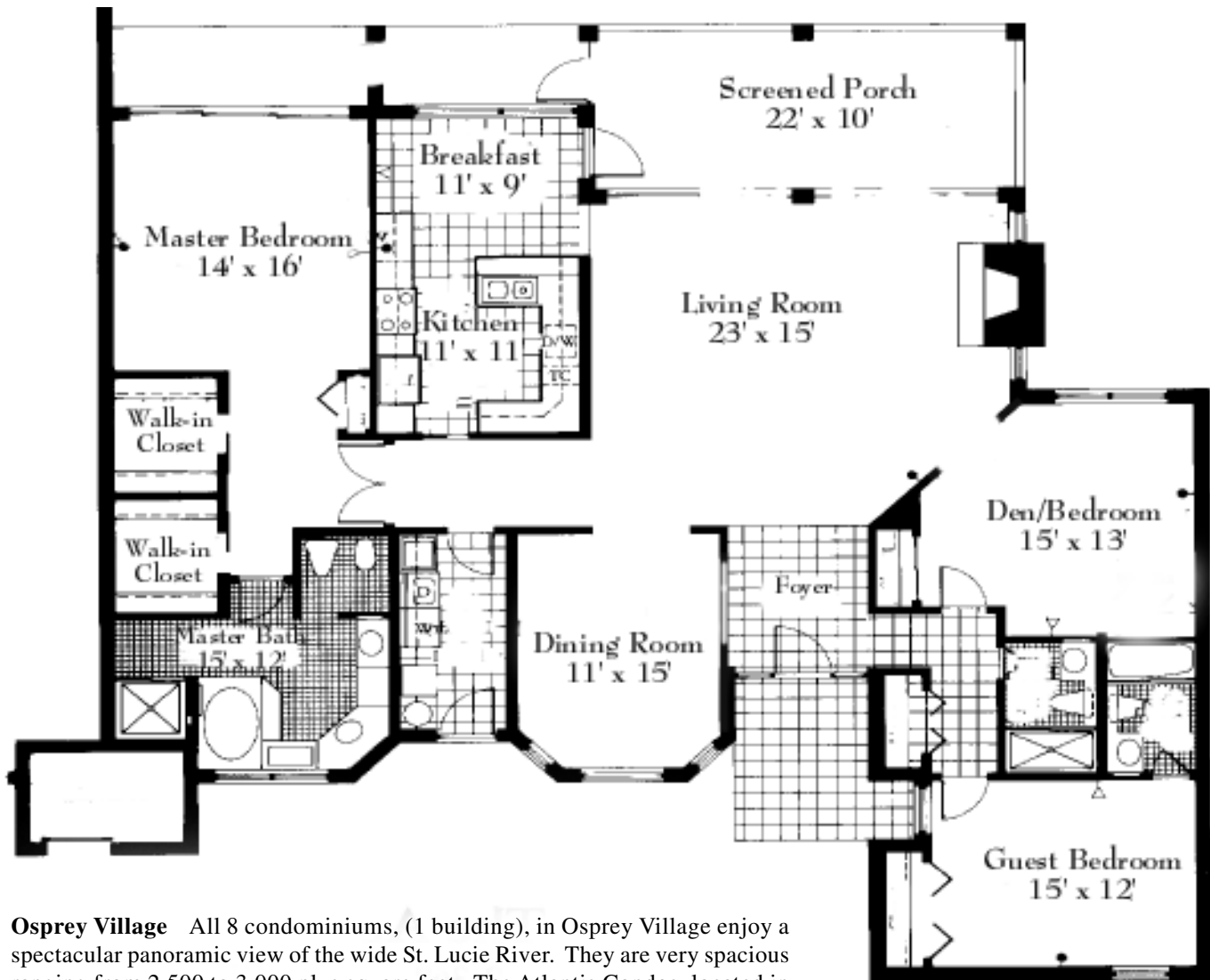
Master Bedroom Suite
With Wide St. Lucie River View

Guest Bedroom With Attached Bath





Premier & Panoramic Wide St. Lucie River Views



Osprey Village All 8 condominiums, (1 building), in Osprey Village enjoy a spectacular panoramic view of the wide St. Lucie River. They are very spacious ranging from 2,500 to 3,000 plus square feet. The Atlantis Condos, located in the interior of the building, have porches that protrude from the center of the building affording privacy and spectacular river views. All major rooms are located directly on the river and enjoy breathtaking views. Additional features include: cathedral and tray ceilings, garage, golf cart garage, elevators for second floor condos and community pool.